



**GPZ-2500**

**Supplier:** Gateprotect AG  
**Web:** www.gateprotect.com  
**Price in kroner:** From 186 000  
**Software (version):** 8.6.0  
**Administration tool:**  
 Gateprotect User Interface  
 8.6 (build 1650)  
**Processor(s):** no information  
**Memory:** 4 096 MB  
**Administration ports:** 1 console (RJ-45)  
**Serial port (RS-232):** no  
**Display:** yes  
**Redundant devices (HA):** yes, active/passive  
**Load balancing:** yes  
**Redundant power supply:** yes  
**No. of RJ-45:** 12  
**No. of SFP:** 6 (up to 10Gb/s)  
**Link protocol:** Ethernet/xDSL/ISDN  
**Network protocol:** ip  
**Transport protocol:** tcp, udp, icmp, gre, esp, ah  
**Application protocol:** 50+  
**IDS/IPS/UTM:** yes/ yes / yes  
**GW antivirus/antispyware/antispam:** yes / yes / yes  
**Scan application protocol:** http(s), ftp, pop3, smtp, sip  
**VPN:** yes  
**SSL-VPN:** yes  
**Content filtering:** yes  
**RADIUS/LDAP/AD:** no/ yes / yes  
**Dynamic routing:** rip, ospf  
**QoS:** yes  
**Energy consumption:** 130 Watt  
**Annual costs (1 kr/kWh):** 1 147 kroner

**+** Powerful Hardware, complete feature list, eGUI

**-** No support for ssh-console administration

# Muscle and Genius in the latest German Wall

Gateprotect GPZ-2500 is a smoking hot new firewall from Germany. The hardware is solid with a lot of refinements. But its biggest advantage is the user-friendly interface.

**Text:** Lars Dobos **Foto:** Andreas Eklund

**L**iksom Astaro SG425 (tested by TechWorld earlier this year), Gateprotect GPZ-2500 is a German firewall based on Linux and iptables, but with its own developed software for administration and configuration. Both are big names in their home markets, but relatively unknown in Sweden – which is a pity, we must add. These are great products. GPZ-2500 is Gateprotect's latest top model and we've managed to get our hands on it in time for the product release. It's a generous machine with powerful hardware and multiple functions. Physically, there are no fewer than 12 RJ-45 connectors for Gigabit Ethernet and six SFP ports for a speed of up to 10 Gigabits per second. At the front there is a window that displays information about the IP addresses as well as two USB ports that can be used for



program updates etc. The operating system finds USB units immediately and can also be started from a USB stick.

**A lot of space**  
 There are two hard disks in the backplane which can be mirrored or used separately. The operating system itself takes up only a fraction of the 160 gigabyte storage area. This means we have a lot of free space for things like log files that often fill up the disk space over time. A dual redundant power supply is naturally included here too. We access the administration via the console port at the front or via the program that's part of the package. The console can also be accessed via SSH, but Gateprotect does not offer support for this type of administration. As a result, customers wanting to use the console use it at their own risk and need to

know what they're doing. On the other hand, the administration program is in most cases so good that we wonder whether the console is really necessary. According to Gateprotect, there are very few settings that can be made in the console only. There is not yet a web interface, but rumours say this is under development.

**Drag and drop**  
 The Gateprotect GPZ-2500 is a UTM firewall with proxy functionalities for http(s), ftp, pop3, smtp and sip. It includes antivirus protection on the gateway level, IDS/IPS, anti-spam, a content filter, VPN and SSL VPN – and these are just the most important features. There is also support for dynamic routing with RIP and OSPF and a re-

**Rating**

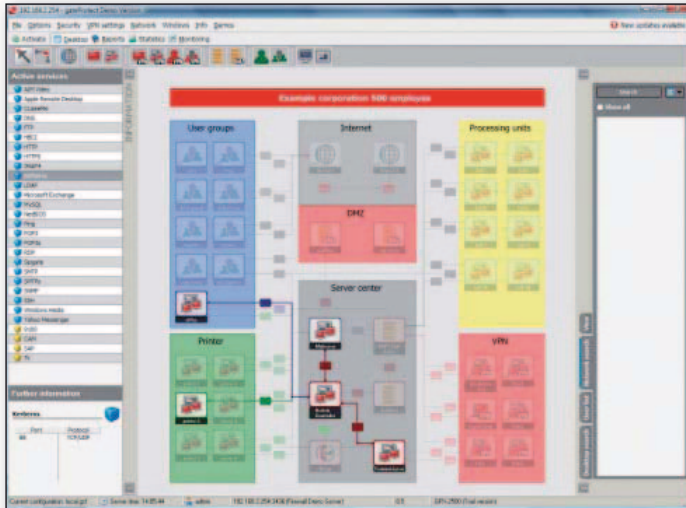
**👍 Promising**

**👎 TVEKSAM**

**👎 DÅLIG**

**In our short tests, we give the reviews Promising, Dubious and Poor. Learn more about our ratings on page 15.**

**"We must applaud the brilliant arrangement and pedagogic approach."**



Complete test configurations are available on Gateprotect's website. Every single icon is an object that we can group and assign properties to. To show an example, here we have marked the control object that connects the user, writer and domain controller via the Kerberos protocol.

Service	Action	Time interval	Other options
DNS		Always on	none enabled
Kerberos		Always on	none enabled
LDAP		Always on	none enabled
NetBIOS		Always on	none enabled

If we right click an object on the user interface, its properties pop up and can be configured. Here we have clicked on a rule or logical link between different groups on the interface. We can mark and configure things in this window too, such as protocols and protocol properties. Really smart!

ally good QoS function, as well as good connections to LDAP and AD. However, the biggest advantage of the Gateprotect GPZ-2500 is the administration and the object thinking with the user interface, icons, symbols and links that represent protocols and rules. Gateprotect calls this eGUI - ergonomic Graphic User Interface. With this system, you hardly need any training at all - you understand it immediately. You just drag and drop icons and symbols from a menu to the user interface and link them with lines that symbolize rules and protocols. The whole thing resembles a circuit diagram and we must applaud the brilliant arrangement and pedagogic approach. We have seen similar attempts by companies like Sonicwall, but Gateprotect thinks further ahead. The overview is superior, but on top of

that it is also easy to search for errors and rules that contradict each other. People used to the traditional lists might consider Gateprotect's system to be over-explicit and not as compact, but we believe that even old firewall foxes will be happy with this arrangement. In some complicated cases there might be a risk of having a really crowded interface, but we doubt that a long list with a hundred entries would be any better.

**TechWorld's summary**

Gateprotect GPZ-2500 is a heavy-duty UTM firewall with solid hardware and an extended set of functions and refinements. But the biggest advantage is the pedagogic eGUI that we consider to be a real step forward for firewall administration. TechWorld recommends having a closer look at it.

# Artologik®

SOFTWARE FOR THE WEB

## Effektivisera din support

Med Artologik® HelpDesk hanterar du smidigt dina supportärenden direkt på webben.

**Fördelar med Artologik HelpDesk:**

- Helt webbaserad lösning
- Allt samlat på ett ställe: ärenden, e-post, kontaktinformation, åtgärder etc.
- FAQ och kunskapsdatabas i verktyget, välj själv vilka frågor som ska finnas i din FAQ
- Ärenden registreras direkt på webben eller via operatör

**Kundexempel**

Assa Abloy  
Belgiska regeringskansliet  
Elanders Infomedia  
Fortifikationsverket  
Semcon Caran

**Priser**

Hyr programmet från 670 kr/mån för 2 ärendeoperatörer, för 10 operatörer blir priset 2 290 kr/månad. Du kan också köpa en licens för installation på egen server.



Läs mer och testa HelpDesk och våra övriga program på [www.artologik.com](http://www.artologik.com)

## Artologik® // HelpDesk

**SOLD IN MORE THAN 25 COUNTRIES**